

JIT Components, Inc.

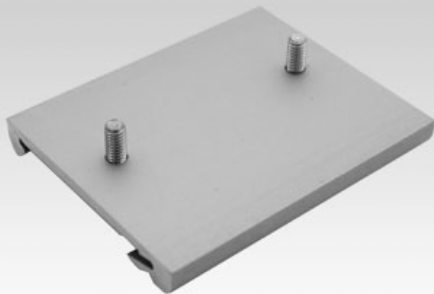
10930 Endeavour Way, Unit A Seminole FL 33777

Phone: (727) 544-9050

Fax: (727) 544-9273

Email: service@jit-components.com

DIN CLIPS w/integrated Bolts - Aluminum



- Suitable for all 35mm DIN Rails
- For rail depths between 1 and 2.5 mm
- Solid aluminum extruded section, natural color, anodized
- Optional black anodized
- Version with electroconductive chromated coating also available
- Integrated wire form spring made of stainless steel
- Available in 6 sizes
- Specials available on request

SPECIFICATIONS

Natural Color Anodized	Electroconductive Chromated	Black Anodized	Number of Mounting Holes	Dimensions
AL-1011	AL-1011C	AL-1011S	1	52 x 39 mm
AL-1012	AL-1012C	AL-1012S	2	52 x 39 mm
AL-1013	AL-1013C	AL-1013S	2	52 x 39 mm
AL-1014	AL-1014C	AL-1014S	2	52 x 39 mm
AL-1015	AL-1015C	AL-1015S	4	52 x 39 mm
AL-1021	AL-1021C	AL-1021S	1 Hole, 1 Slot	52 x 65 mm
AL-1022	AL-1022C	AL-1022S	2	52 x 65 mm
AL-1033	AL-1033C	AL-1033S	2	52 x 78 mm
AL-1044	AL-1044C	AL-1044S	2	52 x 100 mm
AL-1055	AL-1055C	AL-1055S	2	52 x 125 mm
AL-1066	AL-1066C	AL-1066S	2	52 x 300 mm