

JIT Components, Inc.

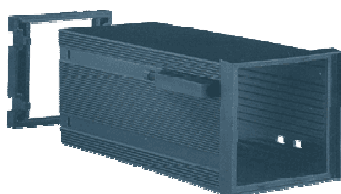
10930 Endeavour Way, Unit A Seminole FL 33777

Phone: (727) 544-9050

Fax: (727) 544-9273

Email: service@jit-components.com

PM72144BS 2



This enclosure can easily be assembled without the use of fixing screws. The PCB is inserted from the rear side of the enclosure using the internal PCB guides and it is fixed by the rear frame with a snap-lock mechanism. Either the front or the rear panels can be inserted into the enclosure by a snap-lock mechanism. Lengths (L) different from the standard ones are available upon request.

Material		Self-extinguishing PPO				
PM72144BS 2	Available Complete Cases					
DIMENSIONS	MM			IN		
	W	H	L	W	H	L
01.112 L057	72	144	57	2.84	5.67	2.25
01.112 L075	72	144	75	2.84	5.67	2.95
01.112 L100	72	144	100	2.84	5.67	3.94
01.115 L124	72	144	124	2.84	5.67	4.88
OPTIONS						
06.296 0000	Front panel, anodized, aluminium, mat)					
06.256 0000	Front panel, PPO UL94 V-0, black					
06.355 0000	Front panel, Plexiglass, transparent					
06.205 0000	Front panel, Plexiglass red, transparent					
06.345 0000	Front panel, PC permeable to infra - red light					
06.315 0000	Rear panel, anodized Aluminium, mat					
06.276 0000	Rear panel, PPO UL 94 V-0, black					
06.375 0000	Rear panel, PVC UL 94 V-0, black					
03.435 0000	Protection Cover IP54					
03.445 0000	Protection Cover IP65					
	Machining and printing					