

JIT Components, Inc.

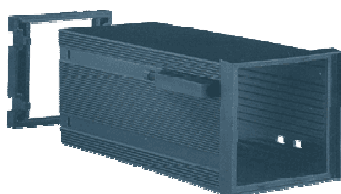
10930 Endeavour Way, Unit A Seminole FL 33777

Phone: (727) 544-9050

Fax: (727) 544-9273

Email: service@jit-components.com

PM7272B



This enclosure can easily be assembled without the use of fixing screws. The PCB is inserted from the rear side of the enclosure using the internal PCB guides and it is fixed by the rear frame with a snap-lock mechanism. Either the front or the rear panels can be inserted into the enclosure by a snap-lock mechanism. Lengths (L) different from the standard ones are available upon request.

Material		Self-extinguishing PPO				
PM7272B						
DIMENSIONS	MM			IN		
	W	H	L	W	H	L
01.110 L057	72	72	57	2.84	2.84	2.25
01.110 L075	72	72	75	2.84	2.84	2.95
01.110 L100	72	72	100	2.84	2.84	3.94
01.110 L124	72	72	124	2.84	2.84	4.88
OPTIONS						
06.294 0000	Front panel, anodized, aluminium, mat)					
06.254 0000	Front panel, PPO UL94 V-0, black					
06.353 0000	Front panel, Plexiglass, transparent					
06.203 0000	Front panel, Plexiglass red, transparent					
06.343 0000	Front panel, PC permeable to infra - red light					
06.313 0000	Rear panel, anodized Aluminium, mat					
06.274 0000	Rear panel, PPO UL 94 V-0, black					
06.373 0000	Rear panel, PVC UL 94 V-0, black					
06.365 0000	8 PIN rear panel with mounted pins (OCTAL)					
06.369 0000	11 PIN rear panel with mounted pins (UNDECAL)					
03.433 0000	Protection Cover IP54					
03.443 0000	Protection Cover IP65					
	Machining and printing					