

PART
NAME

LARGE NON-METALLIC ENCLOSURE (STYLE A)

PART
No.

SEA10144 & SEA10164

MATERIAL:

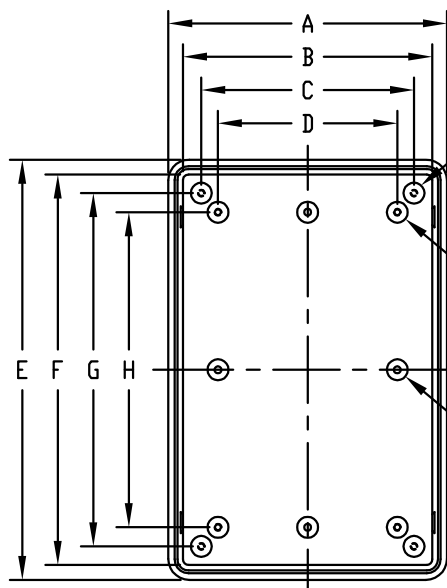
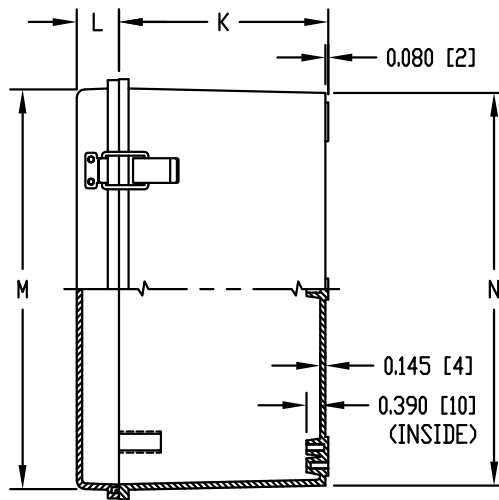
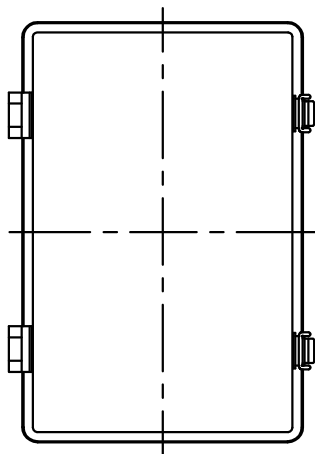
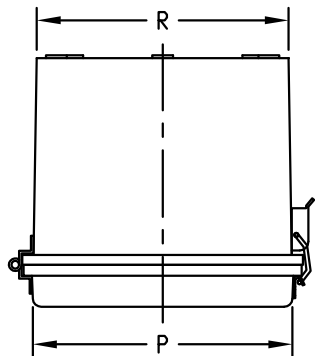
SOLID BODY & COVER _____ ABS/PC BLENDED PLASTIC
UL94-5VB FLAMMABILITY RATING
-40°C TO +70°C TEMPERATURE RANGE

CLEAR COVER _____ POLYCARBONATE PLASTIC
UL94-V0 FLAMMABILITY RATING
-40°C TO +70°C TEMPERATURE RANGE
UV STABILIZED

LATCHES, HINGES &
WALL MOUNTING BRACKETS _____ STAINLESS STEEL

FINISH:

BODY _____ LIGHT GRAY
COVER _____ LIGHT GRAY OR CLEAR



VIEW LESS COVER

0.590 [15] DIA. BOSS
WITH M5 x 0.8mm
THREADED BRASS INSERT
(4) PLACES FAR SIDE

0.590 [15] DIA. BOSS
WITH M5 x 0.8mm
THREADED BRASS INSERT
(4) PLACES

0.590 [15] DIA. BOSS WITH
0.197 [5] DIA. HOLE x
0.395 [10] DEEP
(4) PLACES

COVER IS GASKETED.

NOTE: UNIT COMES COMPLETE WITH
FOUR (4) STAINLESS STEEL
WALL MOUNTING BRACKETS.
(NOT SHOWN)

INTERNAL HINGED PANEL MOUNTING
BRACKETS, AIR & MOISTURE VENTS,
STAINLESS STEEL LOCKING HASP
AND GALVANIZED STEEL INTERNAL
PANEL ARE NOT INCLUDED, BUT
CAN BE PURCHASED SEPARATELY.

INDUSTRY STANDARDS:

UL508 TYPE 1, 2, 4, 4X INDOOR, 12 & 13
NEMA TYPE 1, 2, 4, 4X, 12 & 13
IEC529, IP66

DIMENSIONS = INCHES
[MILLIMETERS]

NOTE: ALL DIMENSIONS HAVE ± 0.039 [± 1] TOLERANCE
UNLESS OTHERWISE SPECIFIED

PART NO.		DIMENSIONS													
SOLID COVER	CLEAR COVER	A	B	C	D	E	F	G	H	K	L	M	N	P	R
SEA10144	SEA10164	7.848 [199]	7.021 [178]	5.990 [152]	5.050 [128]	11.832 [301]	10.989 [279]	9.949 [253]	8.872 [225]	5.899 [150]	1.186 [30]	11.253 [286]	11.060 [281]	7.308 [186]	7.100 [180]