

PART NAME LARGE NON-METALLIC ENCLOSURE (STYLE D)

PART No.

SED10445, SED10465 & SED15445

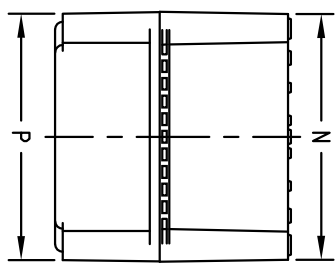
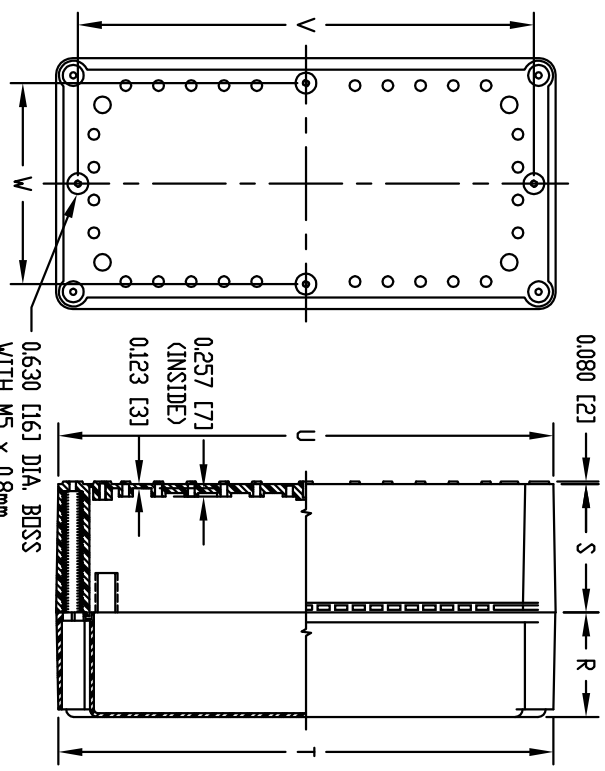
MATERIAL:

INDOOR RATED

SOLID BODY & COVER — ABS/PC BLENDED PLASTIC
UL94-SVB FLAMMABILITY RATING
-40°C TD +70°C TEMPERATURE RANGE
CLEAR COVER — POLYCARBONATE PLASTIC
UL94-VD FLAMMABILITY RATING
-40°C TD +70°C TEMPERATURE RANGE
UV STABILIZED

OUTDOOR RATED

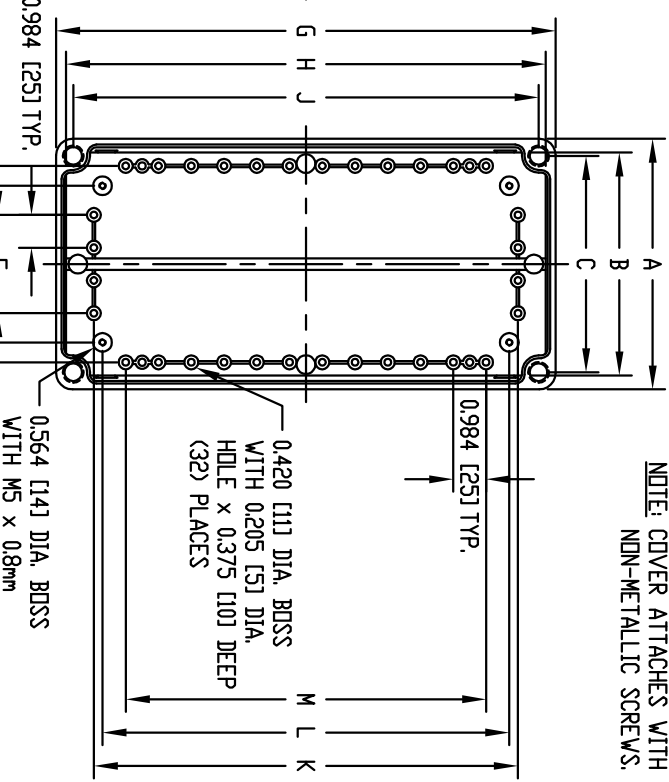
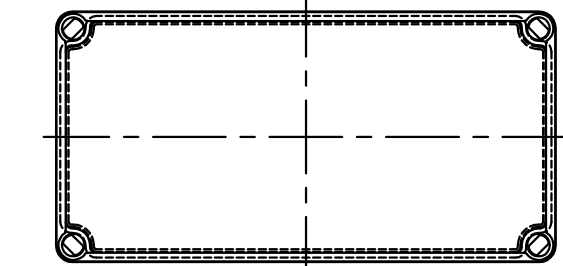
SOLID BODY & COVER — PB1/PC BLENDED PLASTIC
UL94-SVA FLAMMABILITY RATING
-40°C TD +70°C TEMPERATURE RANGE
UV STABILIZED



FINISH:
BODY — LIGHT GRAY
COVER — LIGHT GRAY OR CLEAR
COVER IS GASKETED.

AIR AND MOISTURE VENTS, STAINLESS STEEL LOCKING HASP, PANEL MOUNTING RAILS, GALVANIZED STEEL INNER PANEL AND STAINLESS STEEL WALL MOUNTING BRACKETS ARE NOT INCLUDED, BUT CAN BE PURCHASED SEPARATELY.

INDUSTRY STANDARDS:
INDOOR RATED
UL508 TYPE 1, 2, 4, 4X INDOOR, 12 & 13
NEMA TYPE 1, 2, 4, 4X, 12 & 13
IEC529, IP66
OUTDOOR RATED
UL508 TYPE 1, 2, 4, 4X, 12 & 13
NEMA TYPE 1, 2, 4, 4X, 12 & 13
IEC529, IP66



NOTE: COVER ATTACHES WITH PHILLIPS DRIVE NON-METALLIC SCREWS. (NOT SHOWN)

INDOOR RATED	OUTDOOR RATED
PART NO.	PART NO.

NOTE: ALL DIMENSIONS HAVE ±0.039 [±1] TOLERANCE UNLESS OTHERWISE SPECIFIED

VIEW LESS COVER

DIMENSIONS = INCHES [MILLIMETERS]

DIMENSIONS

SOLID COVER	CLEAR COVER	SOLID COVER	A	B	C	D	E	F	G	H	J	K	L	M	N	P	R	S	T	U	V	W
SED10445	SED10465	SED15445	7.530 [191]	6.700 [170]	6.500 [165]	5.900 [150]	4.705 [120]	2.952 [75]	15.000 [381]	14.405 [366]	13.980 [355]	12.790 [325]	12.222 [310]	10.824 [275]	7.385 [188]	7.400 [188]	3.137 [80]	3.860 [98]	14.870 [378]	14.865 [378]	13.700 [348]	6.039 [153]