



# DIN Rail PCB Holders

## Universal mounting 35, 15 & G rails

**Universal Holders** provides quick & easy mounting of PCBs on all three Rails. Modular design concept allows variable length of PCBs. Active & passive Interface modules used in Electrical circuits with Electronic system as one of its use.

UH-035

UH-070

UH-105

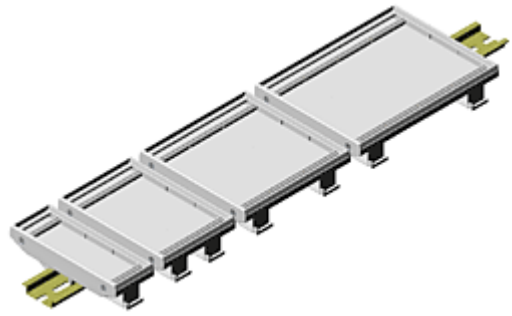
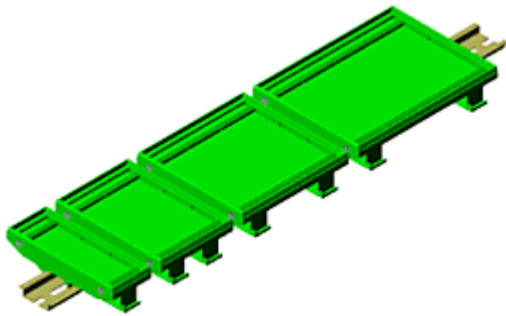
UH-140

UH-175

UH-210

UH-245

UH-280



The typical applications of Universal Holders include interface modules for...

- Din Connectors
- Sub Miniature Din Connectors
- Flat Cable Connectors &
- Modules like ...
- Relay modules, Opto - coupler modules, Switch modules, Fuse modules, Diode modules, Veristor Modules, Power supply modules, Over Voltage protection modules, Data Transmission & Receiver Modules, Analog/ Digital Converter etc.

Model : PCB Size / Ordering Information	
UH-035 : 108x35mm	UH-175 : 108x179.5mm
UH-070 : 108x73mm	UH-210 : 108x215mm
UH-105 : 108x108.5mm	UH-245 : 108x250.5mm
UH-140 : 108x144mm	UH-280 : 108x286mm

The system: PCB Holders assembly consists of 35 mm Foot pieces, Spacer piece with End pieces. Foot piece provides fixing for complete assembly by simple snap fitting on all three rails. Holders have Integral molded PCB guides for Base PCB.

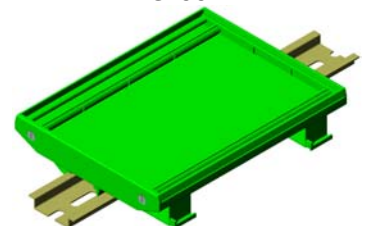
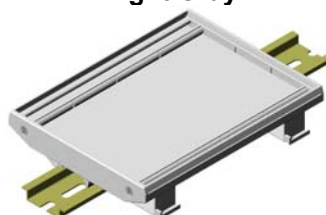
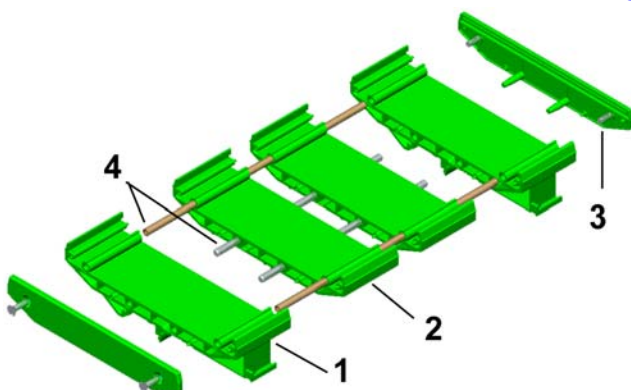
### Holder Parts

1. Foot Piece
2. Spacer Piece
3. End Piece
4. Pins

**Material :** End Piece : Nylon Foot Piece : Nylon 6.6  
Spacer Piece: Nylon

Light Gray

Green



### Ordering Information

UH-035	Base PCB Size 108 x 37.5 mm
UH-070	Base PCB Size 108 x 73 mm
UH-105	Base PCB Size 108 x 108.5 mm
UH-140	Base PCB Size 108 x 144 mm
UH-175	Base PCB Size 108 x 179.5 mm
UH-210	Base PCB Size 108 x 215 mm
UH-245	Base PCB Size 108 x 250.5 mm
UH-280	Base PCB Size 108 x 286 mm

### Detail Drawing

