

JIT Components, Inc.

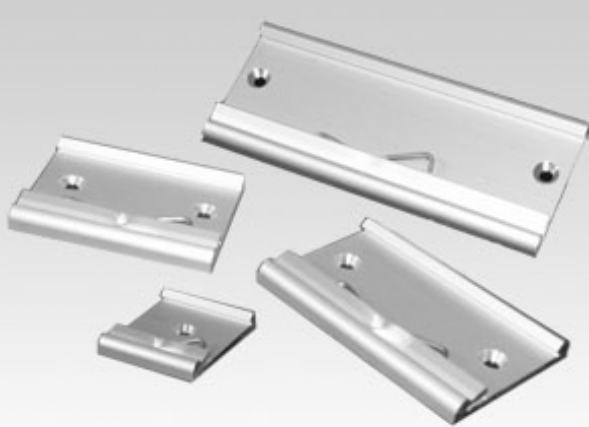
10930 Endeavour Way, Unit A Seminole FL 33777

Phone: (727) 544-9050

Fax: (727) 544-9273

Email: service@jit-components.com

DIN CLIPS w/Counterbore - Aluminum



- Suitable for all 35mm DIN Rails
- For rail depths between 1 and 2.5 mm
- Solid aluminum extruded section, natural color, anodized
- Optional black anodized
- Version with electroconductive chromated coating also available
- Integrated wire form spring made of stainless steel
- Available in 6 sizes
- Specials available on request

SPECIFICATIONS

Natural Color Anodized	Electroconductive Chromated	Black Anodized	Number of Mounting Holes	Dimensions
AL-011o	AL-011oC	AL-011oS	0	52 x 39 mm
AL-0011	AL-0011C	AL-0011S	1	52 x 39 mm
AL-0012	AL-0012C	AL-0012S	2	52 x 39 mm
AL-0013	AL-0013C	AL-0013S	2	52 x 39 mm
AL-0014	AL-0014C	AL-0014S	2	52 x 39 mm
AL-0015	AL-0015C	AL-0015S	4	52 x 39 mm
AL-0021	AL-0021C	AL-0021S	1 Hole, 1 Slot	52 x 65 mm
AL-0022	AL-0022C	AL-0022S	2	52 x 65 mm
AL-0033	AL-0033C	AL-0033S	2	52 x 78 mm
AL-0044	AL-0044C	AL-0044S	2	52 x 100 mm
AL-0055	AL-0055C	AL-0055S	2	52 x 125 mm
AL-0066	AL-0066C	AL-0066S	2	52 x 300 mm