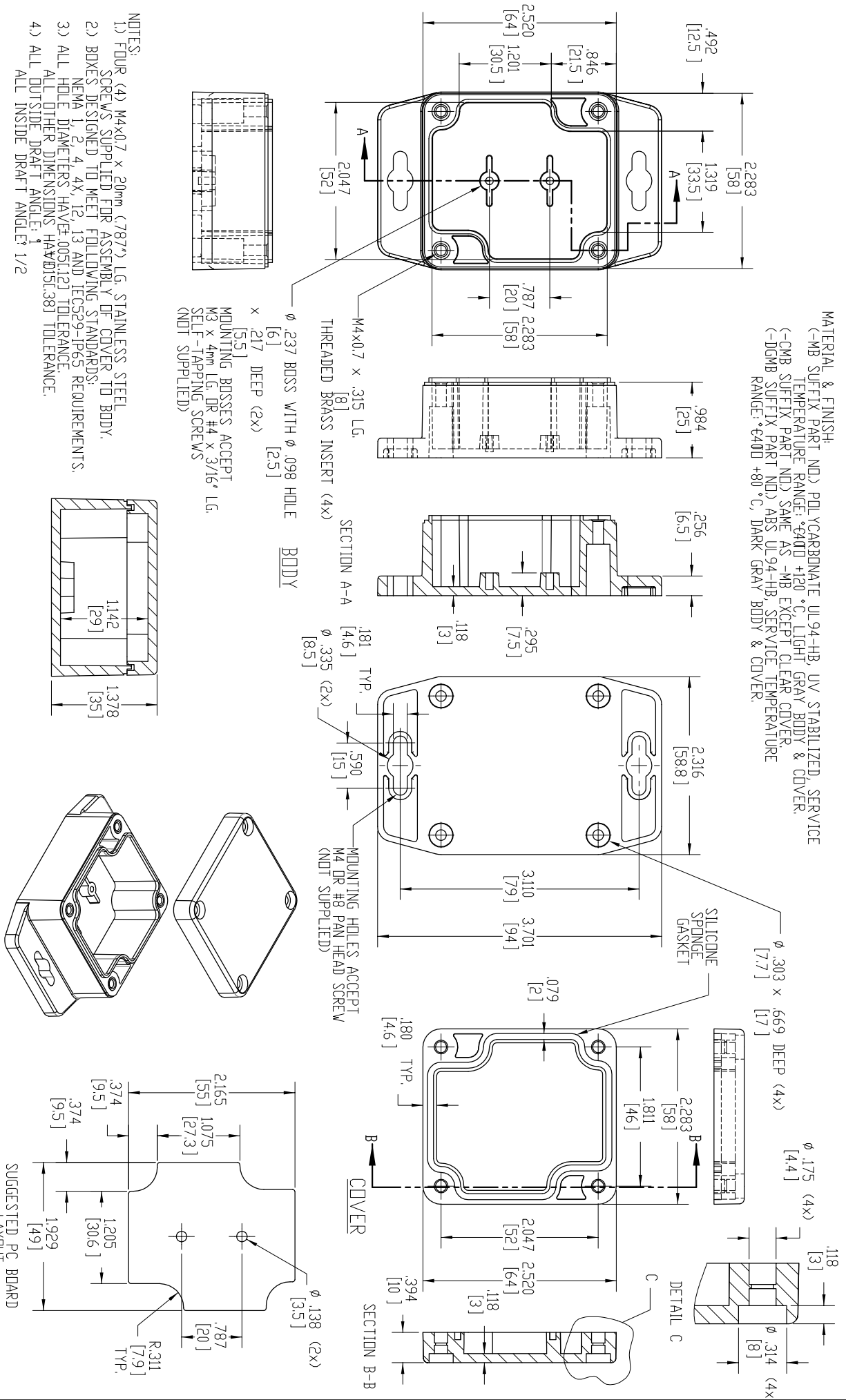


PART NAME	NEMA 4X PLASTIC BDX W/EXTERNAL MTG. BRKT.	PART No.	SE1320-MB	SE1320-CMB	SE1320-DGMB	REVISION DATE	5-26-11
-----------	---	----------	-----------	------------	-------------	---------------	---------

MATERIAL & FINISH:
 (-MB SUFFIX PART NO.) POLYCARBONATE UL 94-HB, UV STABILIZED, SERVICE TEMPERATURE RANGE: +40D +120 °C, LIGHT GRAY BODY & COVER.
 (-CMB SUFFIX PART NO.) SAME AS -MB EXCEPT CLEAR COVER.
 (-DGMB SUFFIX PART NO.) ABS UL 94-HB, SERVICE TEMPERATURE RANGE: +40D +80 °C, DARK GRAY BODY & COVER.



- NOTES:
- 1) FOUR (4) M4x0.7 x 20mm (.787") LG. STAINLESS STEEL SCREWS SUPPLIED FOR ASSEMBLY OF COVER TO BODY.
 - 2) BOXES DESIGNED TO MEET FOLLOWING STANDARDS:
 NEMA 1, 2, 4, 4X, 12, 13 AND IEC529-IP65 REQUIREMENTS.
 - 3) ALL HOLE DIAMETERS HAVE ±.005(±.12) TOLERANCE.
 ALL OTHER DIMENSIONS HAVE ±.015(±.38) TOLERANCE.
 - 4) ALL OUTSIDE DRAFT ANGLE: 1°
 ALL INSIDE DRAFT ANGLE: 1/2°

M4x0.7 x .315 LG. THREADED BRASS INSERT (4X)
 φ .237 BOSS WITH φ .098 HOLE
 x .217 DEEP (2X)
 MOUNTING BOSSES ACCEPT M3 x 4mm LG. DR #4 x 3/16" LG. SELF-TAPPING SCREWS (NOT SUPPLIED)

SECTION A-A
 BODY

SECTION B-B
 COVER

SECTION C
 DETAIL C

SILICONE SPONGE GASKET
 φ .303 x .669 DEEP (4X)

MOUNTING HOLES ACCEPT M4 DR #8 PAN HEAD SCREW (NOT SUPPLIED)

SUGGESTED PC BOARD LAYOUT