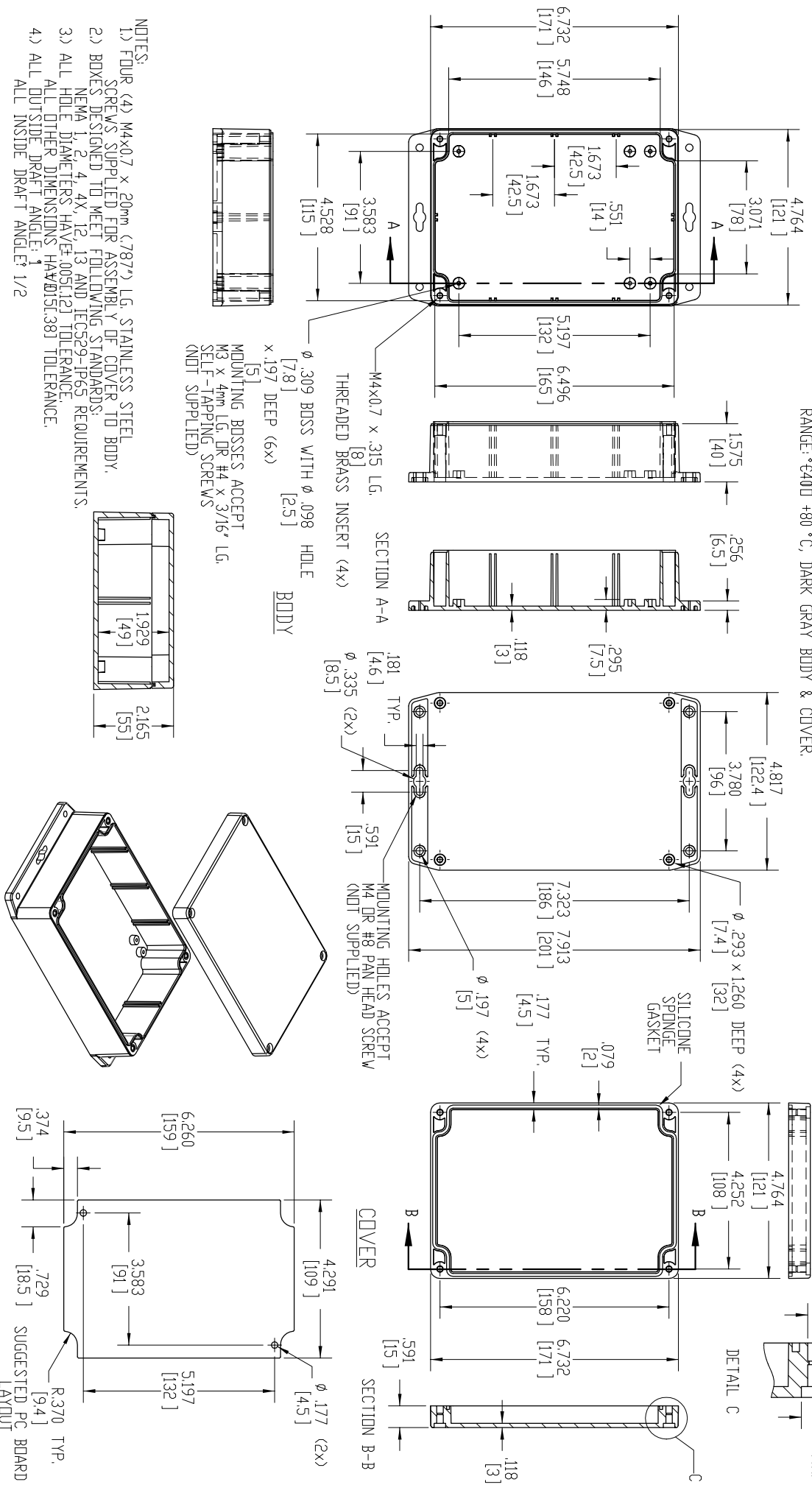


MATERIAL & FINISH:  
 (-MB SUFFIX PART NO.) POLYCARBONATE UL94-HB, UV STABILIZED, SERVICE TEMPERATURE RANGE: +400 +120 °C, LIGHT GRAY BODY & COVER.  
 (-CMB SUFFIX PART NO.) SAME AS -MB EXCEPT CLEAR COVER.  
 (-DGMB SUFFIX PART NO.) ABS UL94-HB, SERVICE TEMPERATURE RANGE: +400 +80 °C, DARK GRAY BODY & COVER.



- NOTES:
- 1) FOUR (4) M4x0.7 x 20mm (.787") LG. STAINLESS STEEL SCREWS SUPPLIED FOR ASSEMBLY OF COVER TO BODY.
  - 2) BOXES DESIGNED TO MEET FOLLOWING STANDARDS:  
 NEMA 1, 2, 4, 4X, 12, 13 AND IEC529-IP65 REQUIREMENTS.
  - 3) ALL HOLE DIAMETERS HAVE .005(12) TOLERANCE.  
 ALL OTHER DIMENSIONS HAVE .015(.381) TOLERANCE.
  - 4) ALL OUTSIDE DRAFT ANGLE: 1/2  
 ALL INSIDE DRAFT ANGLE: 1/2

