

# JIT Components, Inc.

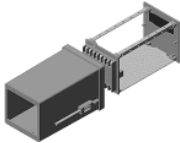
10930 Endeavour Way, Unit A Seminole FL 33777

Phone: (727) 544-9050

Fax: (727) 544-9273

Email: [service@jit-components.com](mailto:service@jit-components.com)

## PMIC150



### COMPONENT

### DIMENSIONS

#### MM

#### IN

W

H

L

W

H

L

PMIC150

96

96

150

3.78

3.78

5.91

## SPECIFICATIONS

Case Material

ABS

## COMPLETE CASES

PART NUMBER	DESCRIPTION
PMIC-150-01	Case only in Black gloss Color
PMIC-150-02	Case + Clamps
PMIC-150-03	Case +Clamps + Cassette 'A' type (FP, BP plain & Metal plate)
PMIC-150-04	Case + Clamps + Cassette 'B' type (FP, BP with 8 GT-1 Term, & Metal plate)
PMIC-150-05	Case + Clamps + Cassette 'C' type (FP with display cutout, BP with integral 'C' - Wire Jumper Max 8Term & Metal plate)
PMIC-150-06	Case + Clamps + Cassette 'D' type (FP with display cutout, BP with integral 'D' - PCB Insertion Max 8Term)

## INDIVIDUAL PARTS

DESCRIPTION	MATERIAL	COLOR	PART NO.
Clamps 100mm Long for IC-110,150,148,048,072			ICCL-100
Front Plate Plain for 96x96 case in A & B Type Cassette	ABS	Black	FP-96-00
Back Plate Plain for 96x96 case in A & B Type Cassette	ABS	Black	BP-96-00
Front Plate With Display Cut out Type - 01,02,03	ABS	Black	FP-96-01,02,03
Back Plate for integral 'C' & 'D' type term, w/o Term. Connectors	Nylon	Black	BP-96-01
Metal Plate for 110 mm depth Case in IC-110/148	Metal		MPL - 110
Metal Angels for 110 mm depth case in IC-110/148/072	Metal		MAG - 110
Red Transparent Sheet for FP-48-01	Acrylic		RTS-96-01
Term. Connectors C Type Loose			TC-C
Term. Connectors D Type Loose			TC-D
Dust Cover for Term. Replacement in B.P.			DCT
Term. Add On Type for B Type Connection per way			GT-1
PCB for GT-1 Term. Mounting per way available for 2 to 8 ways			GT-1Pcb
Screw set Std for IC-065, 110, 150			SW-96
Terminal Transparent Protection Cover for 96 x 96 case			TC-96
Machining and printing			