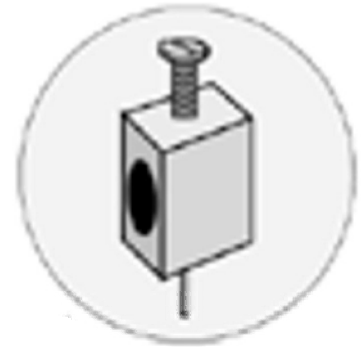


JIT DR450 Terminal Blocks

- PCB terminal Blocks.
- For use with DR450.

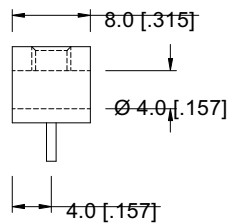
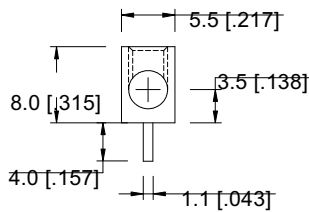


TECHNICAL DATA:

Maximum Load	16A
Max. Wire Diameter	2 x 2.5mm ² 1 x 1 x 4mm ²

Maximum Load	8A
Max. Wire Diameter	1 x 2.5mm ²

16A TERMINAL



8A TERMINAL

