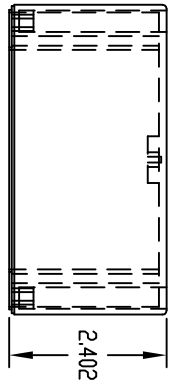
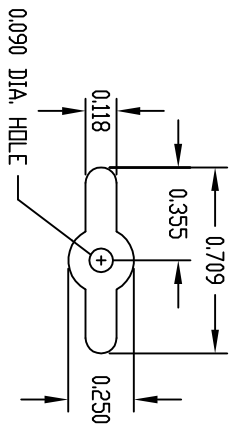


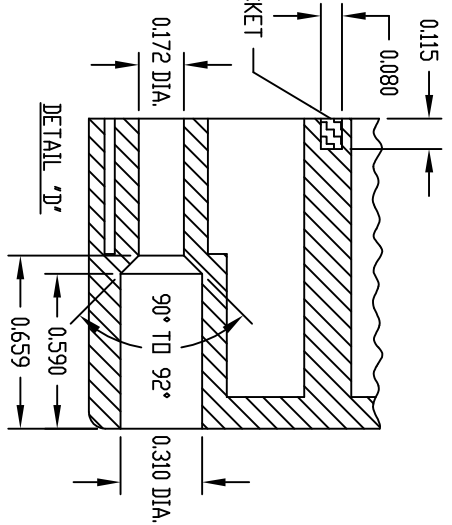
**INDUSTRY STANDARDS:**  
 POLYCARBONATE (LIGHT GRAY AND CLEAR)  
 UL94V-2 FLAMMABILITY RATING (UL FILE #E541613)  
 UV STABILIZED  
 SERVICE TEMPERATURE RANGE: -40°C TO +120°C  
 ABS (DARK GRAY)  
 UL94-HB FLAMMABILITY RATING (UL FILE #E56070)  
 SERVICE TEMPERATURE RANGE: -40°C TO +80°C



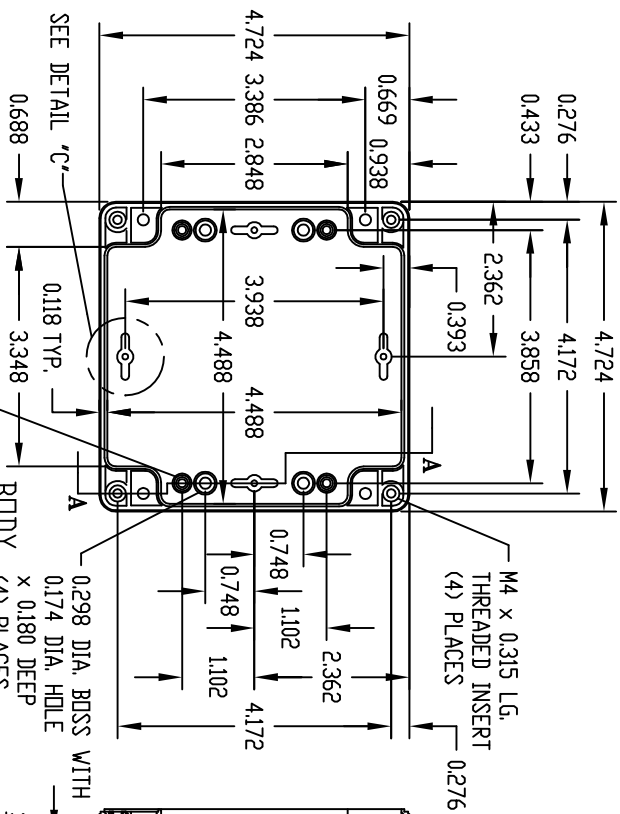
MOUNTING BOSSES USE EITHER  
 M25 METRIC DR #4 STD. SHEET  
 METAL SCREWS x 0.188" LG.  
 (NOT SUPPLIED)



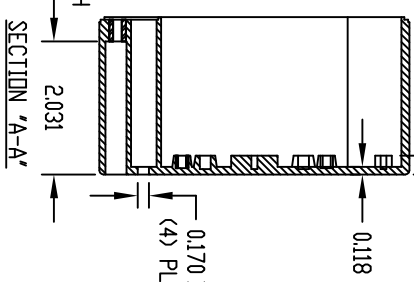
DETAIL 'C'  
 (4) PLACES



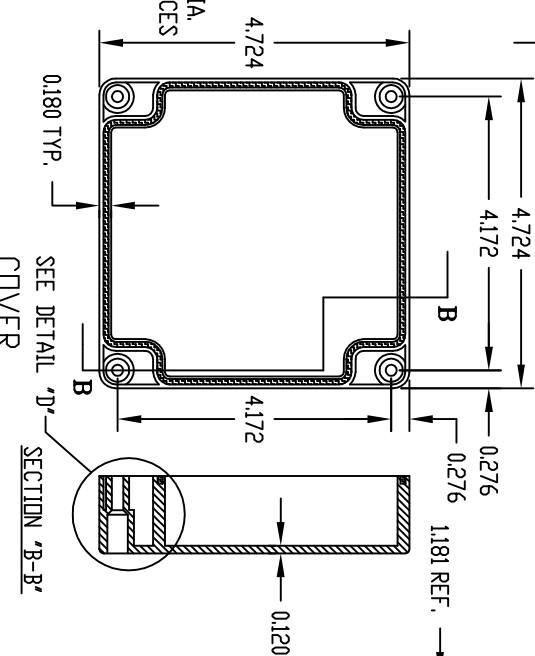
NEOPRENE GASKET



M4 x 0.315 LG.  
 THREADED INSERT  
 (4) PLACES

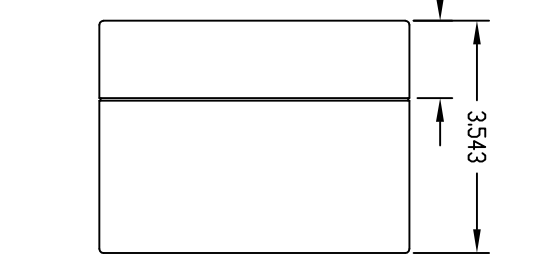


SECTION 'A-A'



SEE DETAIL 'D'

SECTION 'B-B'



0.250 DIA. BOSS WITH M3 x 0.188 LG. THREADED INSERT (4) PLACES (SCREWS NOT SUPPLIED)

MOUNTING BOSSES USE EITHER M5 METRIC DR #10 STD. SHEET METAL SCREWS x 0.312" LG. (NOT SUPPLIED)

NOTE: ALL DIMENSIONS HAVE ±0.015 TOLERANCE UNLESS OTHERWISE SPECIFIED.

PART NUMBER	MATERIAL	FINISH	HARDWARE
PN-1337	POLYCARBONATE	BODY LIGHT GRAY	KIT CONTAINS (4)
PN-1337-C	POLYCARBONATE	BODY CLEAR	M4 x 20mm (0.787") LG.
PN-1337-DG	HIGH-IMPACT ABS	BODY DARK GRAY	SCREWS FOR ASSEMBLY

REV	DATE	DESCRIPTION	BY

**JIT**  
 Components, Inc.  
 www.jit-components.com  
 SE1337, SE1337C, SE1337DG  
 ENCLOSURE LAYOUT

TOLERANCES UNLESS OTHERWISE SPECIFIED:  
 2 PLACE DECIMALS (IN)  
 3 PLACE DECIMALS (IN)  
 ANGLES  
 METRIC (MM)  
 ± .02  
 ± .005  
 ± .5  
 ± .15

DESIGNER	DATE	SCALE
	09/09/98	
SHEET	REV	