

PART NAME NEMA 4X PLASTIC BDX W/EXTERNAL MTG. BRKT.

PART No.

SE1329-MB

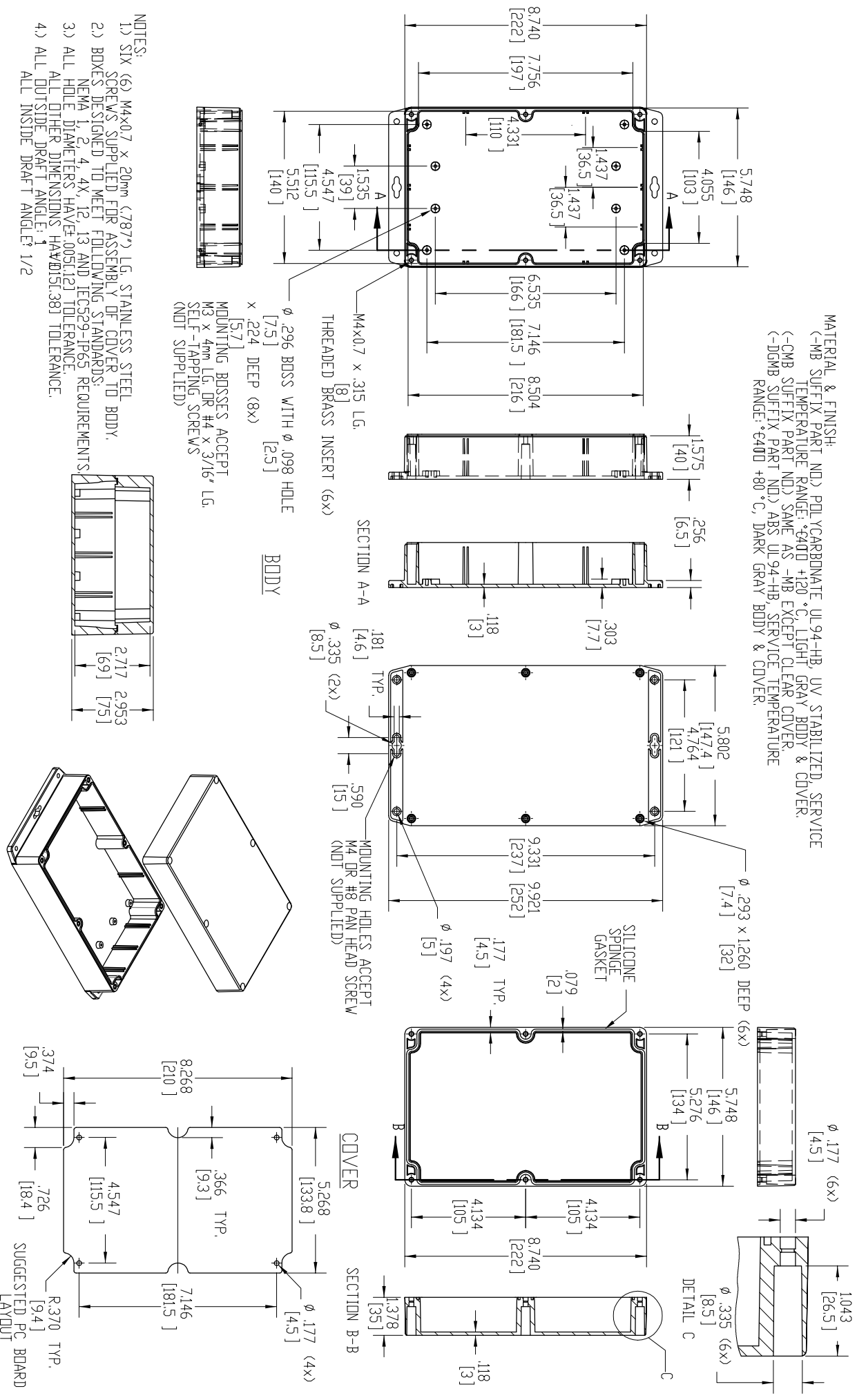
SE1329-CMB

SE1329-DGMB

REVISION DATE

5-26-11

MATERIAL & FINISH  
 (-MB SUFFIX PART NO.) POLYCARBONATE UL94-HB, UV STABILIZED, SERVICE TEMPERATURE RANGE: \*E40D +120 °C, LIGHT GRAY BODY & COVER.  
 (-CMB SUFFIX PART NO.) SAME AS -MB EXCEPT CLEAR COVER.  
 (-DGMB SUFFIX PART NO.) ABS UL94-HB, SERVICE TEMPERATURE RANGE: \*E40D +80 °C, DARK GRAY BODY & COVER.



- NOTES:
- 1) SIX (6) M4x0.7 x 20mm (787) LG. STAINLESS STEEL SCREWS SUPPLIED FOR ASSEMBLY OF COVER TO BODY.
  - 2) BOXES DESIGNED TO MEET FOLLOWING STANDARDS:  
 NEMA 1, 2, 4, 4X, 12, 13 AND IEC5529-1P65 REQUIREMENTS.
  - 3) ALL HOLE DIAMETERS HAVE ±.005(±.12) TOLERANCE.  
 ALL OTHER DIMENSIONS HAVE ±0.12(±.38) TOLERANCE.
  - 4) ALL OUTSIDE DRAFT ANGLE: 1°  
 ALL INSIDE DRAFT ANGLE: 1/2°

MOUNTING BRASSES ACCEPT M3 x 4mm LG. DR #4 x 3/16" LG. SELF-TAPPING SCREWS (NOT SUPPLIED)

Ø .296 BOSS WITH Ø .098 HOLE x .224 DEEP (8x) [5.71] [7.5] [2.5]

SECTION A-A

MOUNTING HOLES ACCEPT M4 OR #8 PAN HEAD SCREW (NOT SUPPLIED)

SECTION B-B

SECTION C

SUGGESTED PCB BOARD LAYOUT